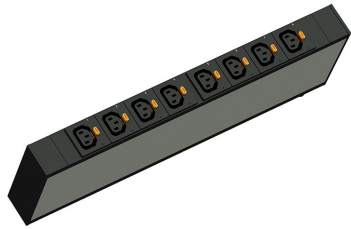




C2G
Discontinued - Rack PDU, Network Switched, 1U, 16A, 208V, (8) C13, L6-20P Cord
Part No. CG-LP-62211



Distribute, manage, and control power to connected equipment, enabling load monitoring, individual outlet power cycling, and power sequencing. This control can be accessed locally or remotely, multiplying the reach and ability of IT staff and caretakers. A single portal view provides visibility and control of power usage and available capacity, which simplifies the maintenance responsibilities of taxed IT departments.

Features & Benefits

Input Plug: NEMA L6-20P

Output Receptacles: (8) Locking IEC-C13, 12A

Circuit Breaker Trip Detection / Alerting: Get notification instantly in the instance of a tripped circuit breaker

Delayed Power Sequencing: Sequence the order in which each outlet is turned on or off to avoid dropped power loads or circuit overloading

Outlet Use Management: From the PDU GUI, you can remotely identify named outlets and if an outlet is on or off

Specifications

General Info

Product Line	C2G	Color	Black
UPC Number	662875019909	Country Of Origin	Taiwan, Province Of China
Number of Receptacles	8	Features	Network-Switched
Application Sector	Commercial, Industrial	Warranty Type	2-Year
Type	PDU		

Technical Information

Rack Units	1
------------	---