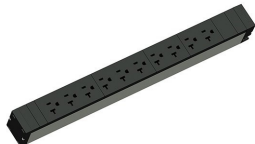




C2G
Discontinued - Rack PDU, Basic, 1U, 16A, 120V, (10) 5-20R, 5-20P Cord
Part No. CG-LP-21210

Basic PDUs provide reliability and simple installation. Standardized power distribution enables cost effective scaling, speed to deployment, and simplifies procurement due to a common platform.



Features & Benefits

Input Plug: NEMA 5-20P

Output Receptacles: (10) NEMA 5-20R, 12A

Integrated Locking Outlets on IEC Receptacles: Eliminates the need for special power cords that lock at the PDU

Rotatable Cord: Enables maximum flexibility for routing the input plug—simplifying the installation of Zero U PDUs

Mounting Types: Available in horizontal and vertical configurations to ensure power distribution is optimally located

Hydraulic-Magnetic Breakers: Provide less heat dependent local protection and quick recovery from circuit overload, by utilizing a two-step response curve—these breakers provide a delay on normal overcurrents, while tripping quickly on short circuits

Specifications

General Info

Product Line	C2G	Color	Black
UPC Number	662875014584	Country Of Origin	China
Number of Receptacles	10	Application Sector	Commercial, Industrial
Type	PDU		

Technical Information

Rack Units	1
------------	---