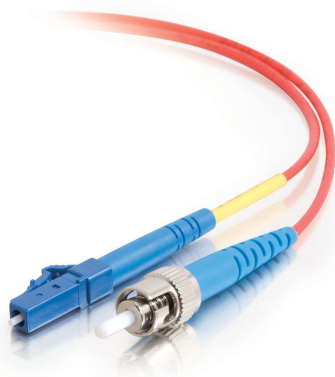




C2G

Discontinued - 9.8ft (3m) LC-ST 9/125 OS2 Simplex Single-Mode Fiber Optic Cable - Plenum CMP-Rated - Red
Part No. CG-37697



Cost-effective solution that provides high bandwidth and transmission rates over longer distances. With LC to ST termination, this high quality fiber optic patch cable is specifically designed for gigabit ethernet applications. The plenum rating provides the fire protection required to run this cable within walls and air plenums without using conduit. The patented injection molding process provides each connection greater durability in resisting pulls, strains and impacts from cabling installs.

Each cable is 100% optically inspected and tested for insertion loss before you receive it. A pull-proof jacket design surrounds the popular 9/125 Single-mode fiber, immune to electrical interference.

Features & Benefits

Designed to support gigabit ethernet applications Plenum CMP rated for cable runs through walls and drop ceilings with plenum air space

Patented injection molding process for greater durability Optically inspected and tested for insertion loss

Pull-proof jacket design, immune to electrical interference

Specifications

General Info

| | | | |
|--------------------|------------------------|-------------------|-----------|
| Product Line | C2G | Color | Red |
| UPC Number | 757120376972 | Country Of Origin | Hong Kong |
| Application Sector | Commercial, Industrial | Type | Cable |

Dimensions

| | |
|--------------|--------|
| Cable Length | 9.8 ft |
|--------------|--------|

Technical Information

| | | | |
|------------------------|----------------------|-----------------|--------------------------|
| Fiber Optic Cable Type | OS2, Single-Mode | Jacket Material | PVC (Polyvinyl Chloride) |
| Jacket Application | Plenum Rated | Bend Radius | 50 mm |
| Simplex/Duplex | Simplex | Cable Type | Fiber Optic |
| Jacket Rating | CMP Rated, FT6 Rated | Connector 2 | ST Male |
| Connector 1 | LC Male | Fiber Size | 9/125 |