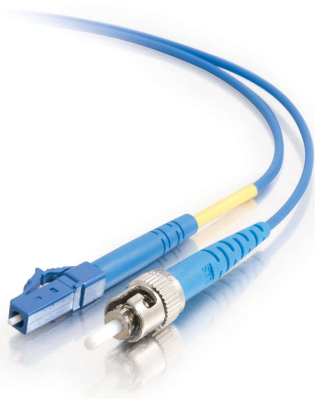




C2G

**Discontinued - 6.6ft (2m) LC-ST 9/125 OS2 Simplex Single-Mode Fiber Optic Cable - Plenum CMP-Rated - Blue**  
Part No. CG-37686



Cost-effective solution that provides high bandwidth and transmission rates over longer distances. With LC to ST termination, this high quality fiber optic patch cable is specifically designed for gigabit ethernet applications. The plenum rating provides the fire protection required to run this cable within walls and air plenums without using conduit. The patented injection molding process provides each connection greater durability in resisting pulls, strains and impacts from cabling installs.

Each cable is 100% optically inspected and tested for insertion loss before you receive it. A pull-proof jacket design surrounds the popular 9/125 Single-mode fiber, immune to electrical interference.

## Features & Benefits

Designed to support gigabit ethernet applications      Plenum CMP rated for cable runs through walls and drop ceilings with plenum air space

Patented injection molding process for greater durability      Optically inspected and tested for insertion loss

Pull-proof jacket design, immune to electrical interference

## Specifications

### General Info

Product Line	C2G	Color	Blue
UPC Number	757120376866	Country Of Origin	Hong Kong
Application Sector	Commercial, Industrial	Type	Cable

### Dimensions

Cable Length	6.6 ft
--------------	--------

### Technical Information

Fiber Optic Cable Type	OS2, Single-Mode	Jacket Material	PVC (Polyvinyl Chloride)
Jacket Application	Plenum Rated	Bend Radius	50 mm
Simplex/Duplex	Simplex	Cable Type	Fiber Optic
Jacket Rating	CMP Rated, FT6 Rated	Connector 2	ST Male
Connector 1	LC Male	Fiber Size	9/125