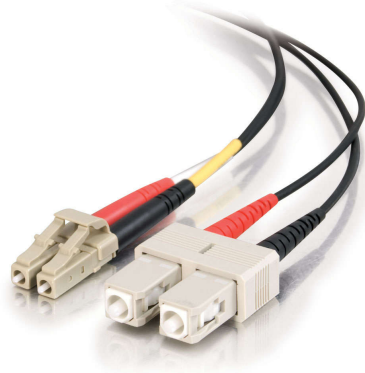




C2G

**Discontinued - 16.4ft (5m) LC-SC 62.5/125 OM1 Duplex Multimode Fiber Optic Cable - Plenum CMP-Rated - Black**  
Part No. CG-37543



With LC to SC termination, this high quality fiber optic patch cable is specifically designed for ethernet, multimedia, or communication applications. The small LC connector [B]takes HALF the size of traditional SC and ST fiber connectors,[/B] since it offers twice the port density of conventional SC and ST connectors to satisfy the need for higher port density in telecom closets, equipment rooms, and work areas.

The LC connector's RJ-style latch clip design gives each connection greater durability in resisting snagging, pulls, strains and impacts during cabling installs and maintenance. Plus, it is easy to engage and disengage with the "telephone jack style" release mechanism. The SC connector features a push-pull locking system. The plenum rating provides the fire protection required to run this cable within walls and air plenums without using conduit.

The patented injection molding process provides each connection greater durability in resisting pulls, strains and impacts from cabling installs.

Each cable is 100% optically inspected and tested for insertion loss before you receive it. A pull-proof jacket design surrounds the popular 62.5/125 multimode fiber, immune to electrical interference.

## Features & Benefits

- Designed to support gigabit ethernet, FDDI, multimedia, ATM, or any application that requires high speed data transfer
- Patented injection molding process for greater durability
- Pull-proof jacket design, immune to electrical interference
- Plenum CMP rated for cable runs through walls and drop ceilings with plenum air space
- Optically inspected and tested for insertion loss

## Specifications

### General Info

Product Line	C2G	Color	Black
UPC Number	757120375432	Country Of Origin	Hong Kong
Application Sector	Commercial, Industrial	Type	Cable

### Dimensions

Cable Length	16.4 ft
--------------	---------

### Technical Information

Fiber Optic Cable Type	Multimode, OM1	Jacket Material	PVC (Polyvinyl Chloride)
Jacket Application	Plenum Rated	Bend Radius	50 mm
Simplex/Duplex	Duplex	Cable Type	Fiber Optic
Jacket Rating	CMP Rated, FT6 Rated	Data Transfer Rate	1 Gbps
Connector 2	SC Male	Connector 1	LC Male
Fiber Size	62.5/125		