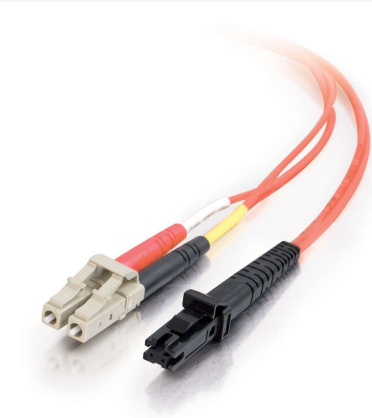




C2G
Discontinued - 98.4ft (30m) MTRJ-LC 62.5/125 OM1 Duplex Multimode PVC Fiber Optic Cable - Orange
Part No. CG-33189



With LC to MTRJ termination, this high quality fiber optic patch cable is specifically designed for fast ethernet, fiber channel, ATM and gigabit ethernet applications. The small LC and MTRJ connectors satisfy the need for higher port density both in the telecom room and the work area, and offer twice the port density of traditional SC and ST fiber connectors. Both connectors with their RJ-style latch clip design are easy to engage and disengage, and give each connection greater durability in resisting pulls, strains, snags, and impacts during cabling installs and maintenance.

The patented injection molding process provides each connection greater durability in resisting pulls, strains and impacts from cabling installs.

Each cable is 100% optically inspected and tested for insertion loss before you receive it. A pull-proof jacket design surrounds the popular 62.5/125 multimode fiber, immune to electrical interference.

Features & Benefits

Designed to support gigabit ethernet, fibre channel, ATM, or any application that requires high speed data transfer	Patented injection molding process for greater durability
Optically inspected and tested for insertion loss	Pull-proof jacket design, immune to electrical interference

Specifications

General Info

Product Line	C2G	Color	Orange
UPC Number	757120331896	Country Of Origin	Hong Kong
Application Sector	Commercial, Industrial	Warranty Type	Lifetime
Type	Cable		

Dimensions

Cable Length	98.4 ft
--------------	---------

Technical Information

Fiber Optic Cable Type	Multimode, OM1	Jacket Material	PVC (Polyvinyl Chloride)
Jacket Application	Riser Rated	Bend Radius	50 mm
Simplex/Duplex	Duplex	Cable Type	Fiber Optic
Jacket Rating	FT4 Rated, OFNR Rated	Cable Diameter	1.8 mm
Data Transfer Rate	1 Gbps	Adapter Rear	LC Male, LC Male
Adapter Front	MTRJ Female	Fiber Size	62.5/125