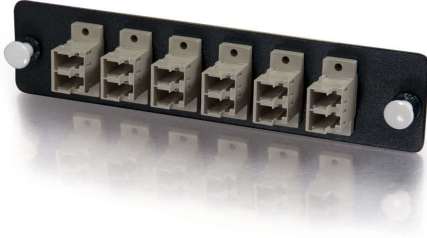




C2G
12-Strand, LC Duplex, PB Insert, Multimode, Beige Adapter Panel (TAA Compliant)
Part No. CG-31115

This fiber distribution system was designed with legacy installations in mind. We offer a comprehensive line of adapter panels (26 pre-loaded configurations) that easily install into any of our rackmount or wallmount enclosures or panels. Constructed with steel, each adapter is pre-loaded with a feed-through mating sleeve that serves as the intermediate connection between the backbone and your patch cable. Simply select your connector type, then plug-and-play.



Features & Benefits

Available in different colors

Allows for easy install into any of our rackmount or wallmount enclosures or panels

Constructed with steel, pre-loaded with a feed-through mating sleeve

Specifications

General Info

Product Line	C2G	Color	Beige
UPC Number	757120311157	Country Of Origin	United States
Type	Adapter Panel		

Trade Programs

TAA Compliant	Yes
---------------	-----