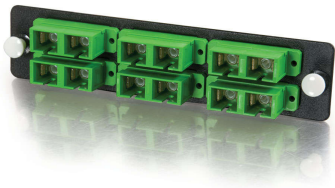


This fiber distribution system was designed with legacy installations in mind. We offer a comprehensive line of adapter panels (26 pre-loaded configurations) that easily install into any of our rackmount or wallmount enclosures or panels. Constructed with steel, each adapter is pre-loaded with a feed-through mating sleeve that serves as the intermediate connection between the backbone and your patch cable. The zirconia ceramic ferrule insert is resistive to fiber misalignment when exposed extreme temperature changes. Simply select your connector type, then plug-and-play.



Features & Benefits

- Designed for legacy installations
- Designed for legacy installations
- Designed for legacy installations
- Designed for legacy installations
- Designed for legacy installations
- Designed for legacy installations

Specifications

General Info

Product Line	C2G	Color	Aqua
UPC Number	757120311065	Country Of Origin	United States
Type	Adapter Panel		

Additional Information

Prop 65 Warning Required	Yes	Prop 65 Warning Language	Cancer and Reproductive Harm
--------------------------	-----	--------------------------	------------------------------