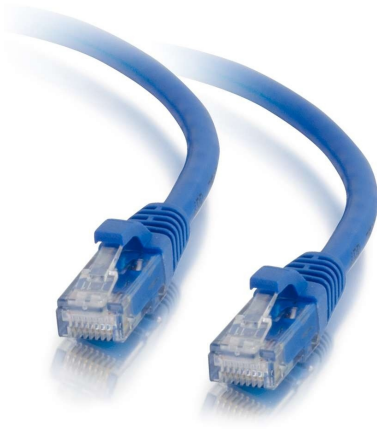




C2G
200ft (61m) Cat5e Snagless Unshielded (UTP) Ethernet Network Patch Cable - Blue
Part No. CG-21943



For fast Ethernet networks that require bandwidth-intensive voice, data, or video distribution applications. Meets all Cat5e TIA/EIA standards, and drastically reduces both impedance and structural return loss (SRL). Each of the individual pairs is bonded together to help maintain the twist-spacing throughout the line right up to the termination point. Constructed from high quality copper cable, this design minimizes Near-End Crosstalk (NEXT) levels. The molded, snagless boot prevents unwanted cable snags during installation and provides extra strain relief. Available in a variety of colors to easily color-code your network installation.

Features & Benefits

- Snagless design protects clips when plugging and unplugging
- Standard RJ45 connectors and unshielded twisted pair wires
- Available in 10 colors to color-code a network
- Available in lengths up to 150ft

Specifications

General Info

| | | | |
|--------------------|-------------------------------------|-------------------|----------|
| Product Line | C2G | Color | Blue |
| UPC Number | 757120219439 | Country Of Origin | Vietnam |
| Application Sector | Commercial, Industrial, Residential | Warranty Type | Lifetime |
| Type | Cable | | |

Dimensions

| | | | |
|-------------------|----------|--------------|--------|
| Product Length US | 200.0 FT | Cable Length | 200 ft |
| Outside Diameter | 5.3 mm | | |

Listing Agencies / 3rd Party Agencies

| | | | |
|--------------|-----|-----------------|-----|
| CE Certified | Yes | REACH Compliant | Yes |
|--------------|-----|-----------------|-----|

Additional Information

| | |
|----------------|-----|
| RoHS Compliant | Yes |
|----------------|-----|

Technical Information

| | | | |
|-----------------|--------------------------|-----------------------------|----------------------|
| Jacket Material | PVC (Polyvinyl Chloride) | Category Performance Rating | Cat 5e |
| Wire Gauge | 24 AWG | Shielded/Unshielded | Unshielded |
| Shield Type | UTP | Cable Type | Ethernet Patch Cable |
| Jacket Rating | Standard / Non-Rated | Cable Diameter | 5.3 mm |
| Connector Type | Booted, Snagless | Indoor/Outdoor | Indoor |
| Connector 2 | RJ-45 Male | Connector 1 | RJ-45 Male |
| Bandwidth | 350 mHz | | |
