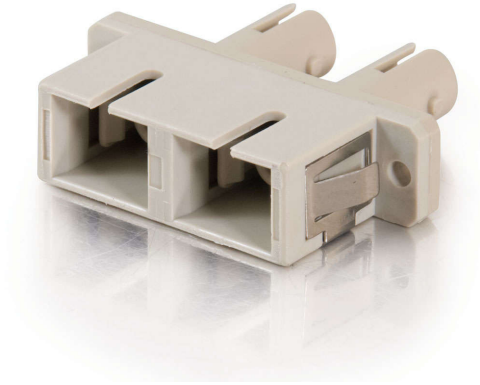


A great solution when you need to join two fiber patch cables together. The coupler is panel-mountable so you can use it where all your connections are accessible.



## Features & Benefits

Allows for two fiber patch cables to be joined together

Panel-mountable for accessible connections

Durable, plastic design

## Specifications

### General Info

Product Line	C2G	Color	Beige
UPC Number	757120176466	Country Of Origin	China
Application Sector	Commercial, Industrial	Type	Adapter

### Technical Information

Simplex/Duplex	Full-Duplex	Connector 2	ST Female
Connector 1	SC Female		