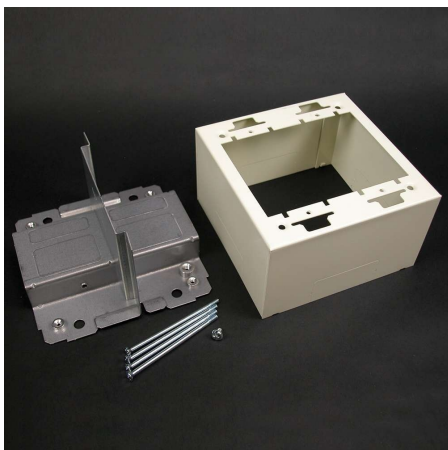




C2G
DISCONTINUED: Wiremold® 2400D Double Gang Divided Device Box Fitting (TAA Compliant)
Part No. CG-16189



Wiremold 2400D series raceway is a dual compartment raceway designed for communication or power applications and ideal for use in classrooms, offices, and hotel applications, or anywhere a small low profile raceway is needed. Labor saving, over-the-raceway device box. Divided two-gang box allows both power and low voltage at a single point-of-use. For use with commercially available faceplates.

Features & Benefits

Low profile steel raceway

ScuffCoat™ finish

Removable cover

TAA Compliant

Wiremold Part # V2444D-2N

Specifications

General Info

Product Line	C2G	Color	Ivory
Country Of Origin	United States	Application Sector	Residential, Commercial
Warranty Type	1-Year	Type	Accessory, Fitting

Additional Information

Prop 65 Warning Required	Yes	Prop 65 Warning Language	Cancer and Reproductive Harm
--------------------------	-----	--------------------------	------------------------------