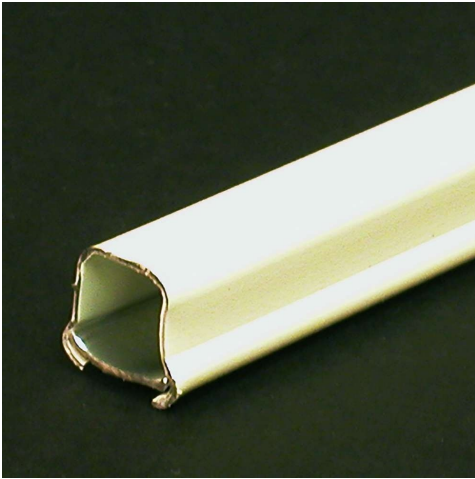




C2G
5ft (1.5m) Wiremold® 700 Raceway Multipack (10-Pack) - Ivory (TAA Compliant)
 Part No. CG-16163



We no longer directly offer this product. You can find it available to purchase with an account at [legrandav.com](https://www.legrandav.com) as part #V700-5.

Wiremold® 700 series raceway is ideal for surface mounting small amounts of electrical wiring or communication cables. These rugged raceways offer a low profile appearance which blend with any decor. 700 series raceway all come with our exclusive ScuffCoat™ finish for increased durability and scratch-resistance. Ideal for surface mounting small amounts of electrical wiring or communication cables. These rugged raceways offer a low profile appearance which blend with any decor.

Features & Benefits

Rugged steel raceway with superior strength for any dry location installation

Low-profile, unobtrusive appearance

Base and cover are a preassembled one-piece unit

Surface mounting eliminates disturbing the building structure or wall finish to make renovations easy

Raceway and fittings meet UL5 specifications and can be installed in conformance with ADA requirements

TAA Compliant

Specifications

General Info

Product Line	C2G	Color	Ivory
UPC Number	757120161634	Country Of Origin	United States
Application Sector	Residential, Commercial	Type	Raceway

Additional Information

Prop 65 Warning Required	Yes	Prop 65 Warning Language	Cancer and Reproductive Harm
--------------------------	-----	--------------------------	------------------------------