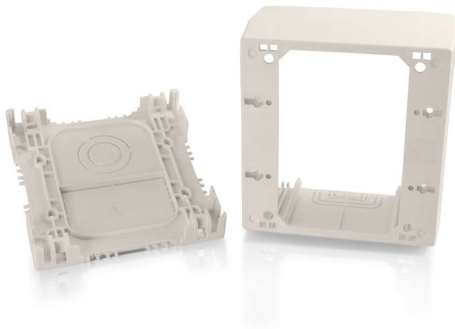




C2G  
Wiremold® Uniduct Double Gang Extra Deep Junction Box - Fog White (TAA Compliant)  
Part No. CG-16132

We no longer directly offer these products. You can find it available to purchase with an account at [legrandav.com](https://www.legrandav.com) as part numbers NM2044-2, NM2044-2WH, and NM2044-2FW.



This junction box is the ideal solution for mounting a wall plate or device and connecting to a piece or to pieces of raceway. The junction box features an extra deep design providing 2-3/4 inch of depth, concentric twistouts for 2700, 2800 and 2900 series raceway on each side of the box, a rectangular knockout in the base for extension to the box and concentric 1/2 and 3/4 inch trade size knockouts. Available in standard colors which match the raceway, this junction box features a smooth plastic finish, which is paintable with latex paint, and is designed to work with a standard double gang wall plate or device.

## Features & Benefits

Extra Deep, 2-3/4 inch, box design	Durable, impact-resistant PVC construction
Standard color to match Uniduct raceway	Paintable using latex paint
TAA Compliant	

## Specifications

### General Info

Product Line	C2G	Color	Fog White
UPC Number	786776089189	Country Of Origin	United States
Application Sector	Residential, Commercial	Type	Junction Box

### Additional Information

Prop 65 Warning Required	Yes	Prop 65 Warning Language	Cancer and Reproductive Harm
--------------------------	-----	--------------------------	------------------------------