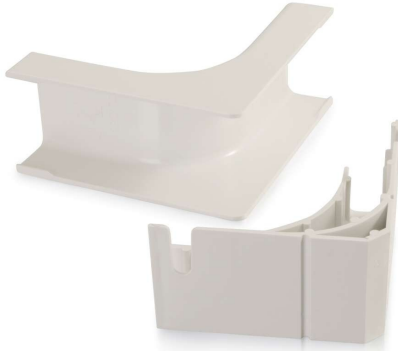




C2G  
**Wiremold® Uniduct 2900 Bend Radius Compliant Internal Elbow - Fog White (TAA Compliant)**  
Part No. CG-16110



We no longer directly offer these products. You can find it available to purchase with an account at [legrandav.com](https://www.legrandav.com) as part numbers 2917FO-FW, 2917FO, and 2917FO-WH.

This internal elbow is the ideal solution for making a right angle turn on the same surface and connecting two pieces of raceway. The internal elbow attaches to the end of two pieces of raceway and allows cabling to make a turn while maintaining 1-1/4in (32mm) bend radius control and protecting bend sensitive cabling. Available in standard colors which match the raceway, this internal elbow features a smooth plastic finish, which is paintable with latex paint, and is designed to work with 2900 series raceway.

## Features & Benefits

Bend radius compliant	Durable, impact-resistant PVC construction
Standard color to match 2900 series raceway	Paintable using latex paint
TAA Compliant	

## Specifications

### General Info

Product Line	C2G	Color	Fog White
UPC Number	786776088618	Country Of Origin	United States
Application Sector	Residential, Commercial	Type	Raceway

### Additional Information

Prop 65 Warning Required	Yes	Prop 65 Warning Language	Cancer and Reproductive Harm
--------------------------	-----	--------------------------	------------------------------