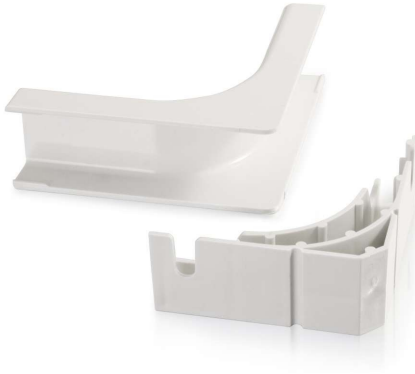




C2G

Discontinued - Wiremold® Uniduct 2800 Bend Radius Compliant Internal Elbow - White

Part No. CG-16064



We no longer directly offer these products. You can find it available to purchase with an account at legrandav.com as part numbers 2817FO-FW and 2817FO-WH.

This internal elbow is the ideal solution for making a right angle turn on the same surface and connecting two pieces of raceway. The internal elbow attaches to the end of two pieces of raceway and allows cabling to make a turn while maintaining 1-1/4in (32mm) bend radius control and protecting bend sensitive cabling. Available in standard colors which match the raceway, this internal elbow features a smooth plastic finish, which is paintable with latex paint, and is designed to work with 2800 series raceway.

Features & Benefits

Bend radius compliant

Durable, impact-resistant PVC construction

Standard color to match 2800 series raceway

Paintable using latex paint

TAA Compliant

Specifications

General Info

Product Line	C2G	Color	White
UPC Number	786776522327	Country Of Origin	United States
Application Sector	Commercial, Residential	Type	Raceway