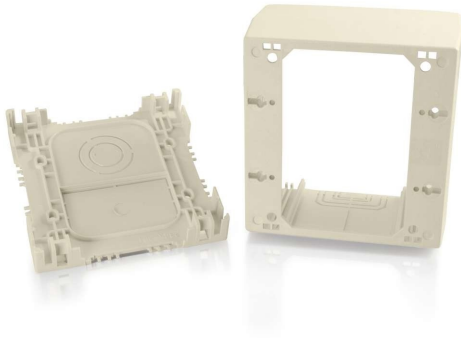




C2G

Discontinued - Wiremold® Uniduct Double Gang Extra Deep Junction Box - Ivory

Part No. CG-16042



We no longer directly offer these products. You can find it available to purchase with an account at legrandav.com as part numbers NM2044-2, NM2044-2WH, and NM2044-2FW.

This junction box is the ideal solution for mounting a wall plate or device and connecting to a piece or to pieces of raceway. The junction box features an extra deep design providing 2-3/4 inch of depth, concentric twistouts for 2700, 2800 and 2900 series raceway on each side of the box, a rectangular knockout in the base for extension to the box and concentric 1/2 and 3/4 inch trade size knockouts. Available in standard colors which match the raceway, this junction box features a smooth plastic finish, which is paintable with latex paint, and is designed to work with a standard double gang wall plate or device.

Features & Benefits

Extra Deep, 2-3/4 inch, box design

Durable, impact-resistant PVC construction

Standard color to match Uniduct raceway

Paintable using latex paint

TAA Compliant

Specifications

General Info

Product Line	C2G	Color	Ivory
UPC Number	786776541816	Country Of Origin	United States
Application Sector	Commercial, Residential	Type	Junction Box