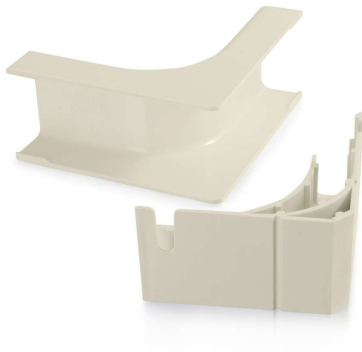




C2G
DISCONTINUED: Wiremold® Uniduct 2900 Bend Radius Compliant Internal Elbow - Ivory (TAA Compliant)
Part No. CG-16020



This internal elbow is the ideal solution for making a right angle turn on the same surface and connecting two pieces of raceway. The internal elbow attaches to the end of two pieces of raceway and allows cabling to make a turn while maintaining 1-1/4in (32mm) bend radius control and protecting bend sensitive cabling. Available in standard colors which match the raceway, this internal elbow features a smooth plastic finish, which is paintable with latex paint, and is designed to work with 2900 series raceway.

Features & Benefits

- Bend radius compliant
- Standard color to match 2900 series raceway
- TAA Compliant
- Durable, impact-resistant PVC construction
- Paintable using latex paint

Specifications

General Info

Product Line	C2G	Color	Ivory
UPC Number	786776512120	Country Of Origin	United States
Application Sector	Residential, Commercial	Type	Raceway

Additional Information

Prop 65 Warning Required	Yes	Prop 65 Warning Language	Cancer and Reproductive Harm
--------------------------	-----	--------------------------	------------------------------