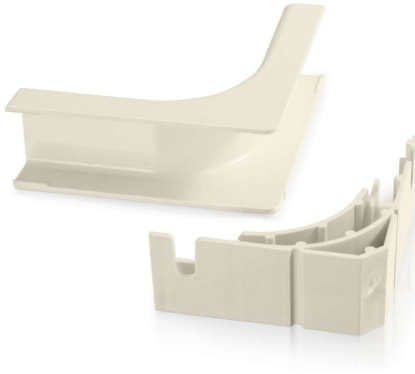




C2G

**Discontinued - Wiremold® Uniduct 2800 Bend Radius Compliant Internal Elbow - Ivory**

Part No. CG-16019



We no longer directly offer these products. You can find it available to purchase with an account at [legrandav.com](http://legrandav.com) as part numbers 2817FO-FW and 2817FO-WH.

This internal elbow is the ideal solution for making a right angle turn on the same surface and connecting two pieces of raceway. The internal elbow attaches to the end of two pieces of raceway and allows cabling to make a turn while maintaining 1-1/4in (32mm) bend radius control and protecting bend sensitive cabling. Available in standard colors which match the raceway, this internal elbow features a smooth plastic finish, which is paintable with latex paint, and is designed to work with 2800 series raceway.

## Features & Benefits

Bend radius compliant

Durable, impact-resistant PVC construction

Standard color to match 2800 series raceway

Paintable using latex paint

TAA Compliant

## Specifications

### General Info

Product Line	C2G	Color	Ivory
Application Sector	Commercial, Residential	Type	Raceway