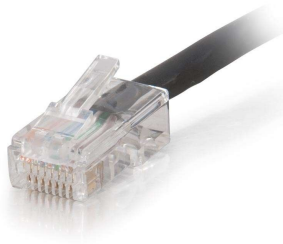




C2G

Discontinued - 1ft (0.3m) Cat5e Non-Booted UTP Unshielded Ethernet Network Patch Cable - Plenum CMP-Rated - Black
Part No. CG-15251



Strict building code requirements for cabling in plenum spaces have created installation challenges in settings such as schools, hospitals and other commercial buildings. C2G has expanded its connectivity portfolio to include a line of cables that are ideal for routing through plenum space above dropped ceilings or under raised floors.

Applications include voice/data/video distribution; this cable will handle bandwidth-intensive applications. Meets all Cat5E TIA/EIA standards, and reduces both impedance and structural return loss (SRL) .

Constructed from high quality plenum cable, this design minimizes Near-End Crosstalk (NEXT) levels. Available in Gray, Blue and Black to easily color-code your network installation.

Features & Benefits

Rated for Plenum, in-wall installations

Cat5e cable with standard RJ45 connectors

Available in lengths up to 100ft

Specifications

General Info

Product Line	C2G	Replaced by Part Number	15291
Color	Black	UPC Number	757120152514
Country Of Origin	United States	Application Sector	Commercial, Industrial, Residential
Type	Cable		

Dimensions

Cable Length	1 ft
--------------	------

Technical Information

Jacket Material	PVC (Polyvinyl Chloride)	Category Performance Rating	Cat 5e
Jacket Application	Plenum Rated	Shielded/Unshielded	Unshielded
Shield Type	UTP	Cable Type	Ethernet Patch Cable
Jacket Rating	CMP Rated, FT6 Rated	Connector Type	Non-booted
Indoor/Outdoor	Indoor	Connector 2	RJ-45 Male
Connector 1	RJ-45 Male		