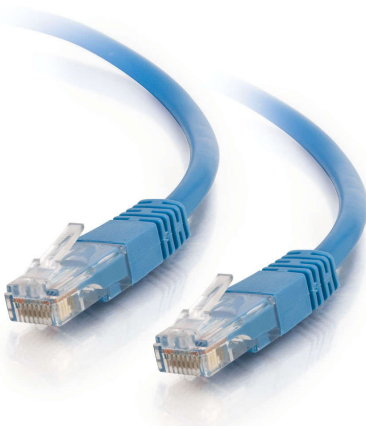




C2G
50ft (15.2m) Cat5e Molded Solid Unshielded (UTP) Ethernet Network Patch Cable - Blue
Part No. CG-15163



For voice/data/video distribution, this cable will handle bandwidth-intensive applications. Meets all Cat5E TIA/EIA standards, and drastically reduces both impedance and structural return loss (SRL) . Each of the individual pairs is bonded together to help maintain the twist-spacing throughout the line right up to the termination point. Constructed from high quality cable and a shortened body plug, this design minimizes Near-End Crosstalk (NEXT) levels.

Please Note: Solid Cat5E patch cables offer increased performance for "over Cat5" signal boosters.

Features & Benefits

Solid twisted pair cable for high performance networking applications

Supports 1 Gigabit networks up to 328ft for fast data transmission and maximum performance

Meets all Cat5e TIA/EIA requirements for supporting a wide variety of applications

Designed to minimize Near-End Crosstalk (NEXT) levels

Specifications

General Info

Product Line	C2G	Color	Blue
UPC Number	757120151630	Country Of Origin	Vietnam
Features	Solid Conductors	Application Sector	Commercial, Industrial, Residential
Warranty Type	Lifetime	Type	Cable

Dimensions

Product Length US	50.0 FT	Cable Length	50 ft
-------------------	---------	--------------	-------

Technical Information

Jacket Material	PVC (Polyvinyl Chloride)	Wire Gauge	24 AWG
Cable Type	Booted, Ethernet Patch Cable, Snagless, Unshielded (UTP)	Jacket Rating	Standard / Non-Rated
Adapter Rear	RJ-45 Male	Adapter Front	RJ-45 Male