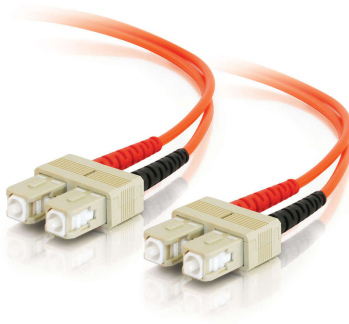


With SC to SC termination, this high quality fiber optic patch cable is specifically designed for ethernet, multimedia, or communication applications. The SC connector features a push-pull locking system.

The patented injection molding process provides each connection greater durability in resisting pulls, strains and impacts from cabling installs.

Each cable is 100% optically inspected and tested for insertion loss before you receive it. A pull-proof jacket design surrounds the popular 62.5/125 multimode fiber, immune to electrical interference.



## Features & Benefits

Designed to support gigabit ethernet, fibre channel, ATM, or any application that requires high speed data transfer

Patented injection molding process for greater durability

Optically inspected and tested for insertion loss

Pull-proof jacket design, immune to electrical interference

## Specifications

### General Info

Product Line	C2G	Color	Orange
UPC Number	757120111429	Country Of Origin	Hong Kong
Application Sector	Commercial, Industrial	Warranty Type	Lifetime
Type	Cable		

### Dimensions

Product Length US	13.1 FT	Cable Length	13.1 ft
-------------------	---------	--------------	---------

### Trade Programs

TAA Compliant	Yes
---------------	-----

### Technical Information

Fiber Optic Cable Type	Multimode, OM1	Jacket Material	PVC (Polyvinyl Chloride)
Bend Radius	50 mm	Simplex/Duplex	Duplex
Cable Type	Fiber Optic	Jacket Rating	Standard / Non-Rated
Data Transfer Rate	1 Gbps	Connector 2	SC Male
Connector 1	SC Male	Fiber Size	62.5/125