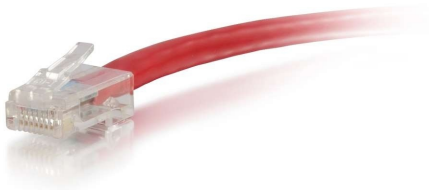


For fast Ethernet and Gigabit computer networks that require bandwidth-intensive voice, data, or video distribution applications. Meets all Cat6 TIA/EIA standards, and drastically reduces both impedance and structural return loss (SRL). Each of the individual pairs is bonded together to help maintain the twist-spacing throughout the line right up to the termination point. Constructed from high quality copper cable, this design minimizes Near-End Crosstalk (NEXT) levels. Available in a variety of colors to easily color-code your network installation.



## Features & Benefits

Designed for network adapters, hubs, switches, routers, HDBaseT applications and more

Supports 10 Gigabit networks up to 180ft for fast data transmission and maximum performance and supports 1 Gigabit up to 328ft

Meets all Cat6 TIA/EIA requirements for supporting a wide variety of applications

Constructed with unshielded twisted pair (UTP) wires, designed to counter EMI, RFI, and crosstalk

Available in a variety of colors to color-code a network

## Specifications

### General Info

Product Line	C2G	Color	Red
UPC Number	757120041542	Country Of Origin	Vietnam
Features	PoE (Power Over Ethernet)	Application Sector	Commercial, Industrial, Residential
Warranty Type	Lifetime	Type	Cable

### Dimensions

Product Length US	7.0 FT	Cable Length	7 ft
-------------------	--------	--------------	------

### Listing Agencies / 3rd Party Agencies

CE Certified	Yes	REACH Compliant	Yes
--------------	-----	-----------------	-----

---

## Additional Information

---

RoHS Compliant      Yes

---

## Technical Information

---

Jacket Material	PVC (Polyvinyl Chloride)	Category Performance Rating	Cat6
Wire Gauge	24 AWG	Shielded/Unshielded	Unshielded
Shield Type	UTP	Cable Type	Ethernet Patch Cable
Jacket Rating	Standard / Non-Rated	Cable Diameter	6 mm
Connector Type	Non-booted	Indoor/Outdoor	Indoor
Connector 2	RJ-45 Male	Connector 1	RJ-45 Male

---