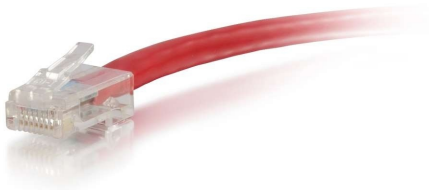


For fast Ethernet and Gigabit computer networks that require bandwidth-intensive voice, data, or video distribution applications. Meets all Cat6 TIA/EIA standards, and drastically reduces both impedance and structural return loss (SRL). Each of the individual pairs is bonded together to help maintain the twist-spacing throughout the line right up to the termination point. Constructed from high quality copper cable, this design minimizes Near-End Crosstalk (NEXT) levels. Available in a variety of colors to easily color-code your network installation.



Features & Benefits

- Designed for network adapters, hubs, switches, routers, HDBaseT applications and more
- Supports 10 Gigabit networks up to 180ft for fast data transmission and maximum performance and supports 1 Gigabit up to 328ft
- Meets all Cat6 TIA/EIA requirements for supporting a wide variety of applications
- Constructed with unshielded twisted pair (UTP) wires, designed to counter EMI, RFI, and crosstalk
- Available in a variety of colors to color-code a network

Specifications

General Info

Product Line	C2G	Color	Red
UPC Number	757120041535	Country Of Origin	Vietnam
Application Sector	Residential, Commercial, Industrial	Warranty Type	Lifetime
Type	Cable		

Dimensions

Cable Length	6 ft
--------------	------

Additional Information

Prop 65 Warning Required	Yes	Prop 65 Warning Language	Cancer and Reproductive Harm
--------------------------	-----	--------------------------	------------------------------

Technical Information

Jacket Material	PVC (Polyvinyl Chloride)	Wire Gauge	24 AWG
Cable Type	Unbooted, Ethernet Patch Cable, Unshielded (UTP)	Jacket Rating	Standard Non-Rated
Adapter Rear	RJ-45 Male	Adapter Front	RJ-45 Male
