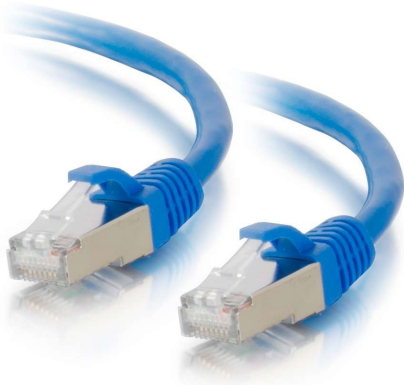




C2G
5ft (1.5m) Cat6a Snagless Shielded (STP) Ethernet Network Patch Cable - Blue
Part No. CG-00676



This Snagless Shielded Cat6a patch cable is ideal for use with 10GBase-T ports and equipment, such as network adapters, hubs, switches, routers, DSL/cable modems and patch panels, and will protect a high speed 10 Gigabit network connection from noise and electromagnetic interference. For voice/data/video distribution, this cable will handle bandwidth-intensive applications and drastically reduces both impedance and structural return loss (SRL). Each patch cable is fully tested to meet ANSI/TIA 568 C.2 Cat6a component requirements.

Each of the individual pairs is bonded together to help maintain the twist-spacing throughout the line right up to the termination point. Constructed from high quality cable and plugs, this design minimizes Near-End Crosstalk (NEXT) levels. Available in a variety of colors to easily color-code a network installation. Individual length label on each cable for ease of use.

Features & Benefits

Designed for network adapters, hubs, switches, routers, HDBaseT applications and more

Supports 10 Gigabit networks up to 328ft for fast data transmission and maximum performance

Meets the ANSI/TIA-568-C.2 Cat6a requirements for supporting a wide variety of applications

Constructed with shielded twisted pair (STP) wires, designed to protect a high speed network from noise and electromagnetic interference

Snagless connector design for high density environments and protecting the RJ-45 connector's lock

Available in a variety of colors to color-code a network

Specifications

General Info

Product Line	C2G	Color	Blue
UPC Number	757120006763	Country Of Origin	Vietnam
Features	PoE (Power Over Ethernet)	Application Sector	Commercial, Industrial, Residential
Warranty Type	Lifetime	Type	Cable

Dimensions

Product Length US	5.0 FT	Cable Length	5 ft
Outside Diameter	6.09 mm		

Listing Agencies / 3rd Party Agencies

CE Certified	Yes	REACH Compliant	Yes
--------------	-----	-----------------	-----

Additional Information

RoHS Compliant	Yes
----------------	-----

Technical Information

Jacket Material	PVC (Polyvinyl Chloride)	Category Performance Rating	Cat6a
Wire Gauge	26 AWG	Bend Radius	49.6 mm
Shielded/Unshielded	Shielded	Conductor	4-Pair Twisted
Shield Type	STP	Cable Type	Ethernet Patch Cable
Jacket Rating	Standard / Non-Rated	Cable Diameter	6.2 mm
Connector Type	Booted, Snagless	Indoor/Outdoor	Indoor
Connector 2	RJ-45 Male	Connector 1	RJ-45 Male
Operating Temperature	-20°-80°C	Insulation Material	FMPE (Foam Polyethylene)
Storage Temperature	-20° - 80° C		
