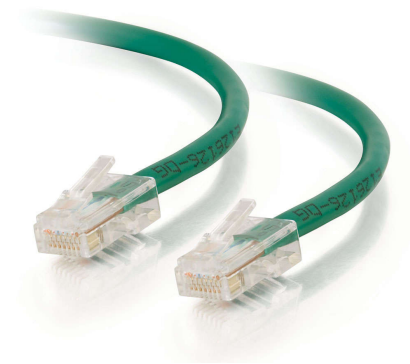




C2G

DISCONTINUED: 150ft (45.7m) Cat5e Non-Booted Unshielded (UTP) Ethernet Network Patch Cable - Green
Part No. CG-00545



For fast Ethernet networks that require bandwidth-intensive voice, data, or video distribution applications. Meets all Cat5e TIA/EIA standards, and drastically reduces both impedance and structural return loss (SRL). Each of the individual pairs is bonded together to help maintain the twist-spacing throughout the line right up to the termination point. Constructed from high quality copper cable, this design minimizes Near-End Crosstalk (NEXT) levels. Available in a variety of colors to easily color-code your network installation.

Features & Benefits

Designed for network adapters, hubs, switches, routers and more

Constructed with unshielded twisted pair wires

Available in 10 colors to color-code a network

Available in lengths up to 150ft

CMG In-Wall Rated Jacket

Specifications

General Info

Product Line	C2G	Color	Green
Application Sector	Residential, Commercial, Industrial	Type	Cable

Dimensions

Cable Length	150 ft
--------------	--------

Additional Information

Prop 65 Warning Required	Yes	Prop 65 Warning Language	Cancer and Reproductive Harm
--------------------------	-----	--------------------------	------------------------------

Technical Information

Jacket Material	PVC (Polyvinyl Chloride)	Wire Gauge	24 AWG
Cable Type	Unbooted, Ethernet Patch Cable, Unshielded (UTP)	Jacket Rating	Standard Non-Rated
Adapter Rear	RJ-45 Male	Adapter Front	RJ-45 Male