



RapidRun VGA + 3.5mm Dual Gang Wall Plate + HDMI & USB Pass Through—White

- Supports VGA video, Stereo Audio, signals over a RapidRun Multi-Format Runner
- Flexible HDMI & USB pigtails for easy installation in a wall box
- Compatible with standard double gang wall boxes
- Aluminum construction for durability and long life



Specifications: RapidRun VGA + 3.5mm Dual Gang Wall Plate + HDMI & USB Pass Through—White

Electrical Characteristics:

Impedance:	75 ± 5 Ohm		
Capacitance:	71 ± 2 pF/ ft nom		
Velocity of Propagation	78 ± 1%		
DC Resistance:	237 ± 10 Ω/km		
Dielectric Strength:	500VAC/1 minute min		
Insulation Resistance:	93.25 Ω/KM at 20°C max.		
Attenuation (nom.):		Min	Max
	Frequency	Limit	Limit
	1~825 MHz	-5 dB	-5 dB
	825~2475 MHz	-5 dB	-12 dB
	2475~4125 MHz	-12 dB	-20 dB
	4125~5100 MHz	-20 dB	-25 dB

Physical Characteristics:

Voltage Rating:	30V
Temperature Rating:	80°C
Temperature Range:	-25° ~ 80° C
Approvals:	CE
Warranty:	Lifetime
Package Type:	Box

Conductor (Qty. 3):

Conductor Type:	28AWG 7/0.127 Tinned Copper
Dielectric:	Min Avg. Thickness: 1.57mm Foam PE
Shield:	Spiral 90% Coverage Tinned Copper
Insulation:	Min Avg. Thickness: 0.23mm PVC: (1) red, (1) blue, (1) green

Conductor (Qty. 3 twisted pair + 2 conductors):

Conductor Type:	24AWG 7/0.2 Tinned Copper
Foil Shield:	Aluminum 100% coverage
Insulation:	Minimum Avg. Thickness: 0.23mm PVC

Overall Cable

Jacket:	Orange Heat Shrink
---------	--------------------

HD15 Connector (Qty. 1):

Connector Type:	High Density D-Sub 15 pin
Gender:	Female
Contact Material:	Brass, 3µm Gold Plating
Insulation:	Black PBT
Note: Pin 9 is not loaded.	

3.5mm Connector (Qty. 1):

Connector Type:	3.5mm Stereo
Gender:	Female
Contact Material:	Brass, 3µm Nickel Plating

HDMI Connector (Qty 1)

Connector Type:	HDMI
Gender:	19pin Female
Contact Material:	Brass, 3µm Gold Plating

USB Connector (Qty 1)

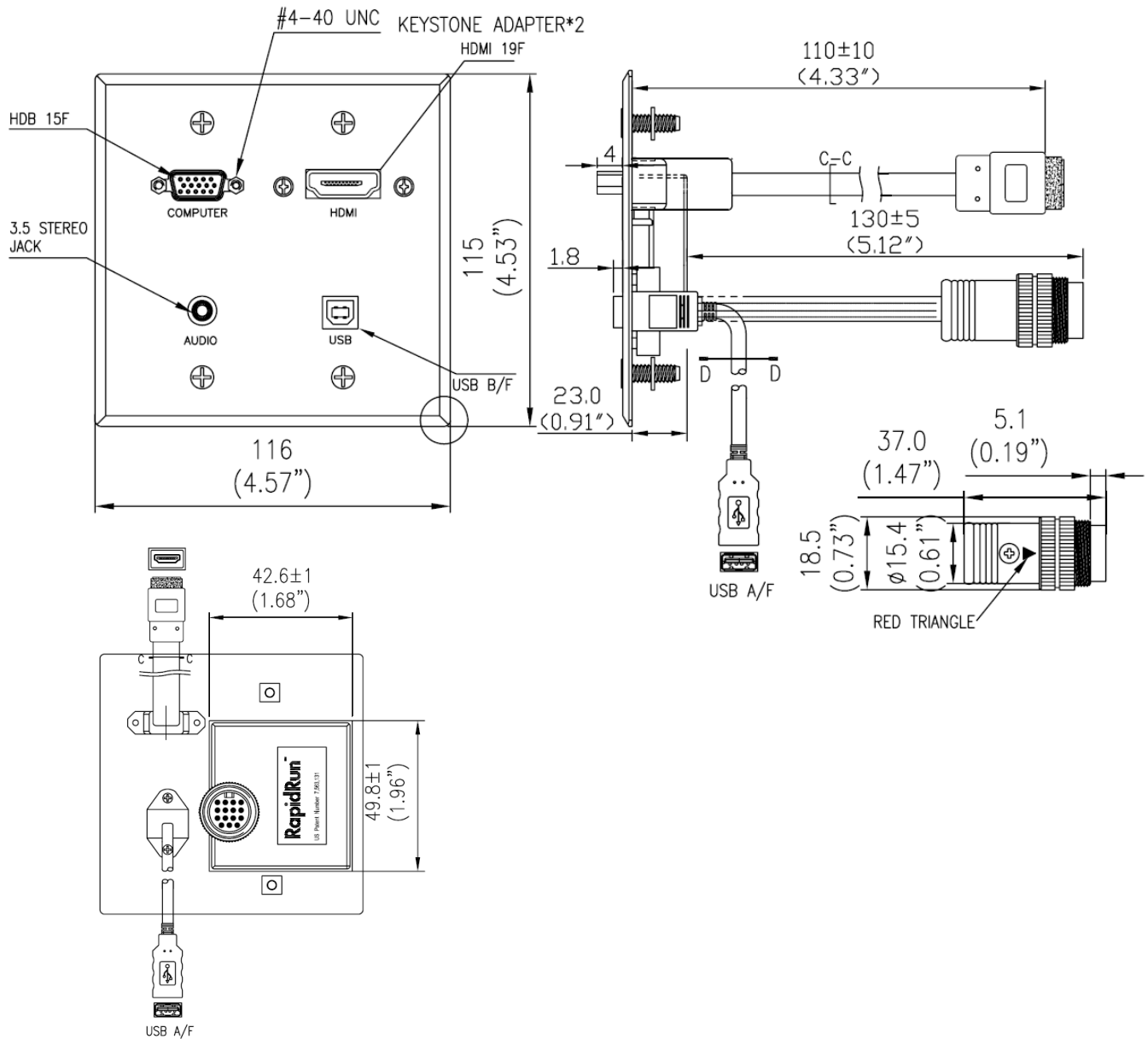
Connector Type:	USB B
Gender:	Female
Contact Material:	Brass, 3µm Gold Plating

RapidRun Din Connector (Qty. 1):

Connector Type:	DIN 15 pin
Gender:	Male
Contact Material:	Brass, 3µm Gold Plating
Insulation:	Black PBT



Specifications: RapidRun VGA + 3.5mm Dual Gang Wall Plate + HDMI & USB Pass Through—White



Part Number	Description	Weight (lbs)
60146	RapidRun VGA + 3.5mm Dual Gang Wall Plate + HDMI & USB Pass Through—White	0.611

