



RapidRun VGA, Stereo Audio, Composite Video and RCA Stereo Audio Double Gang Wall Plate with Dual HDMI Pas Through

- Supports VGA video, Stereo Audio, Composite A/V signals over a RapidRun Multi-Format Runner
- Flexible HDMI pigtailed for easy installation in a wall box
- Compatible with standard double gang wall boxes
- Aluminum construction for durability and long life



Specifications: RapidRun VGA, Stereo Audio, Composite Video and RCA Stereo Audio Double Gang Wall Plate with Dual HDMI Pas Through

Electrical Characteristics:

3 Coax Conductors:

Impedance:	75 ± 5Ohm
Capacitance:	71 ± 2pF/ ft nom
Velocity of Propagation:	78 ± 1%
DC Resistance:	237 ± 10Ω/km
Dielectric Strength:	500VAC/1 minute min.
Insulation Resistance (500V):	10MΩ/KM
Attenuation (dB/6m):	

	Red Coax	Green Coax	Blue Coax
1MHz	0.15	0.14	0.14
10MHz	0.86	0.97	0.41
100MHz	2.98	3.23	1.26
200MHz	4.45	4.87	1.82
500MHz	6.72	7.75	3.00
700MHz	9.95	12.01	3.64
1000MHz	13.20	17.52	4.59

3 Twisted Pair Conductors

DC Resistance:	93.25Ω/m at 20°C
Dielectric Strength:	750VAC/ minute min.
Insulation Resistance:	100Mohm/KM at 20°C

Physical Characteristics:

Voltage Rating:	30V
Temperature Rating:	80°C
Temperature Range:	-25° ~ 80°C
Minimum Bend Radius:	90mm

Approvals:	RoHS Compliant
Warranty:	Lifetime
Package Type:	Box

Conductor (Qty. 3):

Conductor Type:	28AWG 7/0.127 Tinned Copper
Dielectric:	Min Avg. Thickness: 1.57mm Foam PE
Shield:	Spiral 90% Coverage Tinned Copper
Insulation:	Min Avg. Thickness: 0.23mm PVC: (1) red, (1) blue, (1) green

HD15 Connector (Qty. 1):

Connector Type:	High Density D-Sub 15 pin
Gender:	Female
Contact Material:	Brass, 3µm Gold Plating
Insulation:	Black PBT
Note: Pin 9 is not loaded.	

3.5mm Connector (Qty. 1):

Connector Type:	3.5mm Stereo
Gender:	Female
Contact Material:	Brass, 3µm Nickel Plating

Conductor (Qty. 3 twisted pair + 2 conductors):

Conductor Type:	24AWG 7/0.2 Tinned Copper
Foil Shield:	Aluminum 100% coverage
Insulation:	Minimum Avg. Thickness: 0.23mm PVC

RCA Connector (Qty. 3):

Connector Type:	RCA
Gender:	Female

RapidRun Din Connector (Qty. 1):

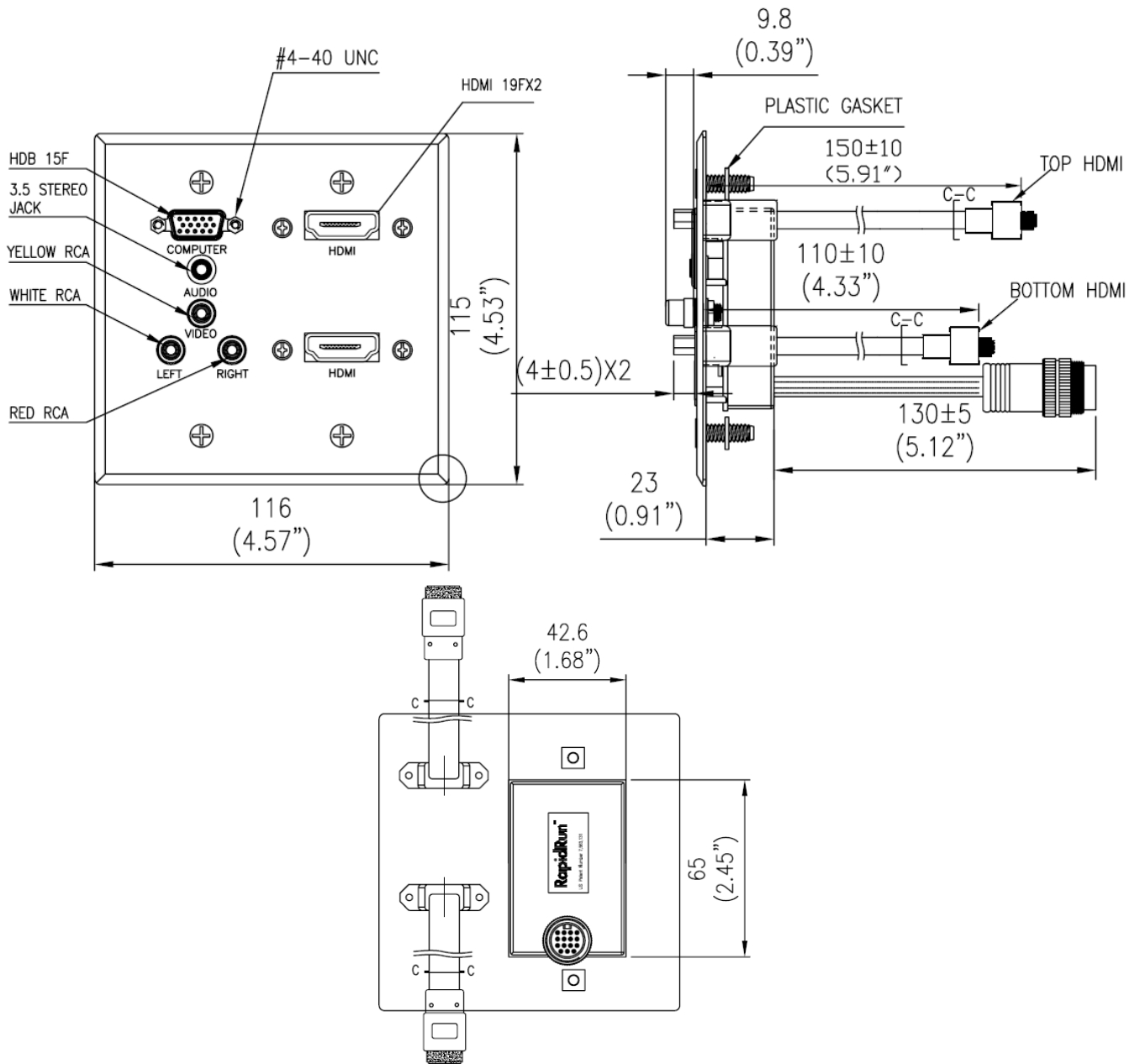
Connector Type:	DIN 15 pin
Gender:	Male
Contact Material:	Brass, 3µm Gold Plating
Insulation:	Black PBT

Overall Cable

Jacket:	Orange Heat Shrink
---------	--------------------



Specifications: RapidRun VGA, Stereo Audio, Composite Video and RCA Stereo Audio Double Gang Wall Plate with Dual HDMI Pas Through



Part Number	Description	Weight (lbs)
60143	RapidRun VGA, Stereo Audio, Composite Video and RCA Stereo Audio Double Gang Wall Plate with Dual	

