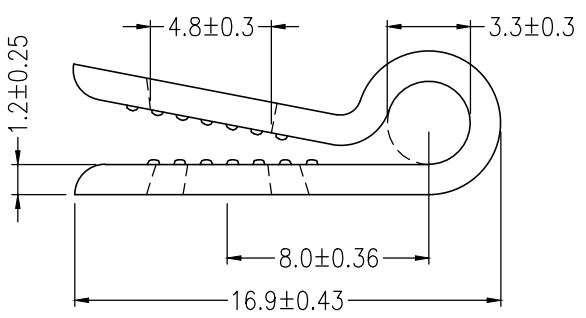
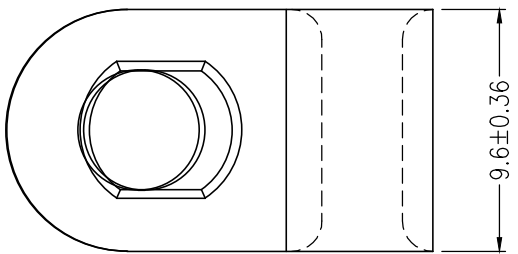


REV.	REVISION HISTORY	DATE
∅	INITIAL RELEASE	JUL.17,2008
1	ADD NOTES & MANUFACTURED	MAY.05,2010



**NOTES:**

1. MATERIAL: NYLON 66, UL94V-2, NATURAL COLOR.
2. ALL MATERIALS ARE RoHS COMPLIANT.
3. TESTING: SAMPLING 10PCS FOR APPEARANCE AND DIMENSIONS TEST BEFORE PACKAGING.
4. PACKAGE: 50PCS/CTG ZIP-LOCK BAG, 800PKS/CARTON.

MANUFACTURED IN TAIWAN



DRAWING APPROVED _____		DATE _____	
SAMPLE APPROVED PER _____		DRAWING SPECIFICATIONS _____	
PROPRIETARY & CONFIDENTIAL. THE INFORMATION CONTAINED IN THIS DRAWING IS THE SOLE PROPERTY OF CABLES TO GO. ANY REPRODUCTION IN PART OR AS A WHOLE WITHOUT THE WRITTEN PERMISSION OF CABLES TO GO IS PROHIBITED.			
	mm	TITLE	
	5:1	1/8" CABLE CLAMP 50PK	
	1/1	CUS. NAME	ENG. DATE
DIMENSIONAL TOLERANCES UNLESS OTHERWISE NOTED		CUS. P/N	CHECKED DATE
<input type="checkbox"/> X ±0.2	<input type="checkbox"/> XX ±0.12	43048	APPROVED DATE
<input type="checkbox"/> XXX ±	ANGLES ±	DWG. NO.	
REV. 1	CUS. REV.	43048	