

Specifications: Product Name

Signal Specifications:

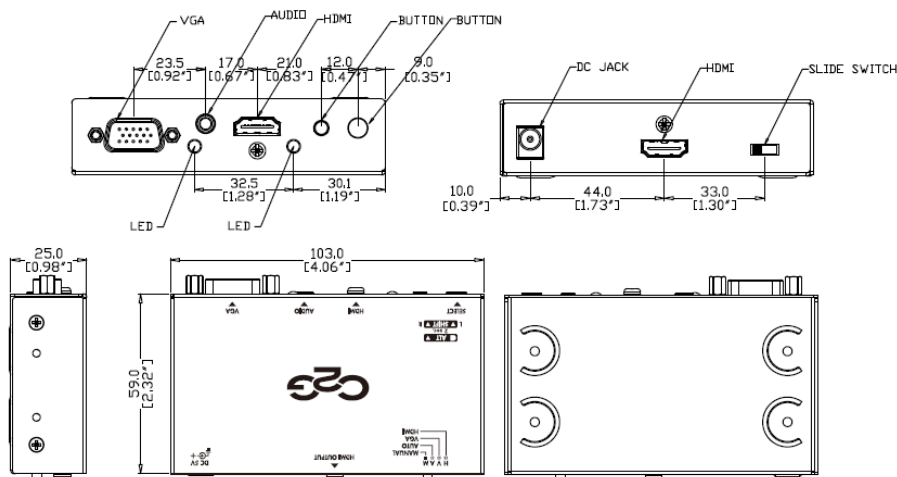
Input Signals:	Analog Computer Video (RGBHV) and Stereo audio. Digital HDMI signal
Output Signal:	Digital HDMI
HDMI TDMS Clock Rate:	225 MHz (Max)
Supports Video Resolution:	Up to 1080p

Power Adapter Specifications:

Power Input:	100 - 240V~50/60Hz
Power Output:	5V, 1.0A
Pin Outer Diameter:	5.4mm
Center Pin Polarity:	Positive
Cable length	5 feet

Physical Specifications:

Dimensions:	103 x 59 x 25mm	4.06 x 2.32 x 0.98 In
Weight	.59 kg	1.3 lbs
Housing material	Steel (SECC)	
Operating Temperature:	0 ~ 40°C	
Storage Temperature:	-10 ~ 60°C	
Relative Humidity:	0 ~ 80% (Non - Condensing)	
Approvals:	CE, RoHS	



Part Number	Description	Weight (lbs)
40814	HDMI, VGA, and Audio Converter Switch	1.3



CABLES TO GO

Cables To Go
3555 Kettering Blvd.
Moraine, OH 45439
Phone: 800.287.2843
www.c2g.com

Follow Us

