

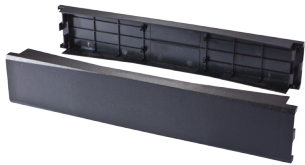
## TOOL-LESS SNAP-IN FILLER PANELS

Tool-less snap-in filler panels are used to fill open rack units in racks and cabinets where separation of cold air and hot air is required. They are designed to work with active equipment and flat, angled or curved patch panels.

The tool-less snap-in filler panels unique patent pending design allows them to snap into 19" EIA/ECA-310-E compliant tapped or square hole mounting rails. Because no field modification is required to fit a tapped hole, the panel can be remounted in a square hole in the future eliminating the need to stock two different types of panels.



14601



14602

Part Number	Description
14601	10 Pack 1U 19in Tool-Less Snap-In Filler Panel – 19"W x 1.75"H
14602	10 Pack 2U 19in Tool-Less Snap-In Filler Panel – 19"W x 3.5"H
14631	2 Pack 1U 19in Tool-Less Snap-In Filler Panel – 19"W x 1.75"H
14632	2 Pack 2U 19in Tool-Less Snap-In Filler Panel – 19"W x 3.5"H

## CABLE MANAGEMENT SUPPORT BAR

Provides strain relief at the rear of a standard 19" rack for horizontal wiring cables that are terminated to modular patch panels that do not include this type of cable management. Support bar is mounted with thumbscrews to the rear upright channels of a rack.



14603

Part Number	Description
14603	U-Type Cable Management Support Bar – 1.5"D, 19"W

## PANEL MOUNTING SCREWS

Mounting screws replace lost or damaged screws for patch panels and cable management panels. These combination head screws with #12-24 threads have a pilot point for easy starting.



14629

Part Number	Description
14629	50 Pack 12-24 x 0.625in Panel Mounting Screws

Follow Us



# RACK & CABINET ACCESSORIES

COMPLETE A RACK OR CABINET INSTALL



14630

## VERTICAL RACK BONDING BUSBAR KIT

Manufactured of 1/4" thick electrolytic tough pitch 110 copper alloy bar. Accommodates one hole lugs or two hole lugs (5/8" on center). 36" bar has 2 PEM studs at one end and the 72" bar has 2 PEM studs at both ends for bonding conductor connection.

### Kits include:

- (1) 1/4" thick electrolytic tough pitch 110 copper alloy bar
- (8) 1/4" x 1/2" stainless steel hex head cap screw
- (3) White delrin insulators
- (4) 5/16" stainless steel lock washer
- (8) 1/4" stainless steel lock washer
- (3) #12-24 x 5/8" hex washer head screw
- (4) 5/16" stainless steel hex nut
- (1) Two-hole long barrel compression lug

Part Number	Description
14630	5/8 x 72in Vertical Grounding Bar Kit

Follow Us



3555 Kettering Blvd. | Moraine OH | 45439 | [www.c2g.com](http://www.c2g.com) | 800.287.2843

© 2015 Legrand All Rights Reserved rev. 08/15 Cut Sheet - 12640

**C2G**<sup>™</sup>  
CABLES TO GO