

CABLE MANAGEMENT PANELS

HORIZONTAL, VERTICAL, AND PASS THRU CABLE MANAGEMENT

Standard horizontal cable managers are available in 1RU, 2RU, 3RU and 4RU sizes. Fingers begin 3/4" from the face of rack to provide bend limitation for cables, protecting cables, equipment and network performance. Included hinged cover mounts with six heavy duty clips allow them to be opened one handed without becoming "unhinged". Manufactured from UL94V-0 rated plastic.

SINGLE-SIDED STANDARD HORIZONTAL CABLE MANAGERS

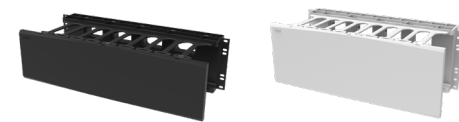
Part Number	Description
14596	1RU Single-Sided Horizontal Cable Manager - Black
14597	2RU Single-Sided Horizontal Cable Manager - Black
SHMC3RU	3RU Single-Sided Horizontal Cable Manager - Black
SHMC3RU-W	3RU Single-Sided Horizontal Cable Manager - White
SHMC4RU	4RU Single-Sided Horizontal Cable Manager - Black
SHMC4RU-W	4RU Single-Sided Horizontal Cable Manager - White

Includes #12-24 mounting hardware



14596

14597



SHMC3RU

SHMC4RU-W

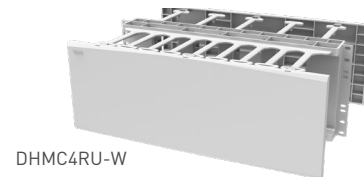
DOUBLE-SIDED STANDARD HORIZONTAL CABLE MANAGERS

Part Number	Description
14598	2RU Double-Sided Horizontal Cable Manager - Black
DHMC3RU	3RU Double-Sided Horizontal Cable Manager - Black
DHMC3RU-W	3RU Double-Sided Horizontal Cable Manager - White
DHMC4RU	4RU Double-Sided Horizontal Cable Manager - Black
DHMC4RU-W	4RU Double-Sided Horizontal Cable Manager - White

Includes #12-24 mounting hardware.



14598



DHMC4RU-W

STANDARD VERTICAL CABLE MANAGEMENT CAGE WITH COVER

Mounts to the side of a standard EIA rack. The fingers are spaced to line up with rack units, promoting efficient routing of patch cords to patch panels and equipment from the vertical manager. Dual snap on hinged covers allow easy access during moves, add, and changes. Available in single-sided and double-sided versions.

SINGLE-SIDED

Part Number	Description
14604	3.75in Single-Sided Vertical Cable Management Cage with Cover – 3.75"W x 6.58"D x 7"H
14606	6in Single-Sided Vertical Cable Management Cage with Cover – 6"W x 6.58"D x 7"H

DOUBLE-SIDED

Part Number	Description
14605	3.75in Double-Sided Vertical Cable Management Cage with Cover – 3.75"W x 13.17"D x 7"H
14607	6in Double-Sided Vertical Cable Management Cage with Cover – 6.00"W x 13.17"D x 7"H
14608	10in Double-Sided Vertical Cable Management Cage with Cover – 10.00"W x 13.17"D x 7"H

14606



Notes: Includes all hardware necessary to mount to the side of a standard EIA rack.

CABLE MANAGEMENT PANELS

CABLE MANAGEMENT PANELS

Complete cable management maximizes system performance. This wide array of panel styles will meet all cable management requirements. Cable management panels provide organized movement of patch cables horizontally and vertically on 19" EIA distribution racks.

Part Number	Description
14593	1RU Horizontal Cable Management Panel with 5 D-Rings
14594	2RU Horizontal Cable Management Panel with 5 D-Rings
14595	1RU Horizontal Cable Management Panel with 5 High-Capacity D-Rings

Notes: Includes #12-24 mounting hardware.



14593



14594



14595

FEED-THROUGH BRUSH PANELS

Feed Through Brush Panels allow cables to be routed from the front of the rack to the rear. The built in brush allows passage of cables while blocking airflow.

Part Number	Description
14599	1RU Cable Pass-Thru Panel with Brush Strip – 1.75"H x 19"W x 2.92"D
14600	2RU Cable Pass-Thru Panel with Brush Strip – 3.5"H x 19"W x 2.92"D

Notes: Includes #12-24 mounting hardware.



14599

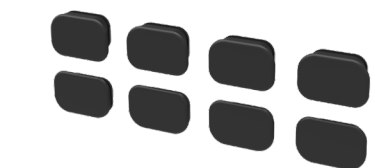


14600

PLUG PUSH-IN CABLE PASS THRU

The 3RU Plug Push-In Cable Pass Thru Blocker Kit for Horizontal Cable Manager is an ideal solution for stopping air recirculation in a 3RU version horizontal cable manager. Simply press in a blocker on the horizontal manager so that the plug groove and horizontal manager groove align, and create a sealed barrier to prevent air recirculation.

Part Number	Description
PHMC3RUC	3RU Plug Push-In Cable Pass Thru Blocker Kit for Horizontal Cable Manager



PHMC3RUC