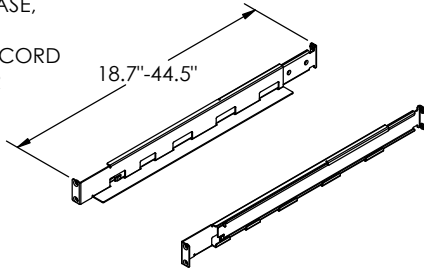


ELECTRICAL PARAMETERS:

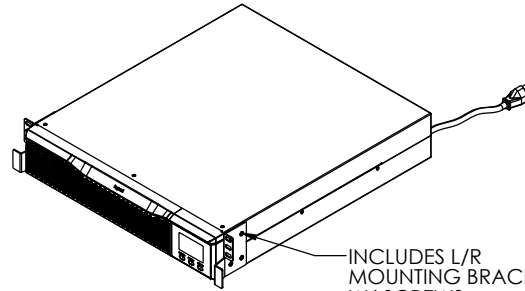
- LINE INTERACTIVE, SINGLE PHASE, 120V, 1.5kVA, 1.35kW
- INPUT TYPE: NEMA 5-15P, 6.0' CORD
- OUTPUT TYPE: (8) NEMA 5-15R
- DISCHARGE TIME:
 - 100% LOAD 4.5 min.
 - 75% LOAD 7.4 min.
 - 50% LOAD 12.8 min.
 - 25% LOAD 28.9 min.

MECHANICAL PARAMETERS:

- WEIGHT 48.0 lbs.
- COLOR BLACK

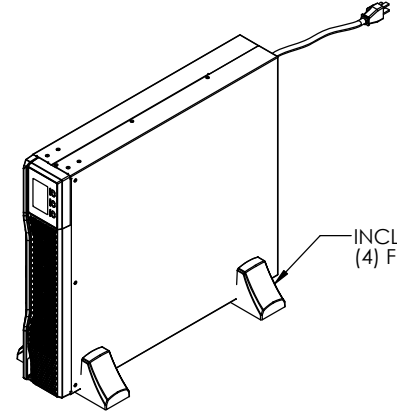


LU-4PKIT-2U 4POST RAIL KIT, 2U
 • (12) M6 RACK SCREWS
 • (6) M6 CAGE NUTS



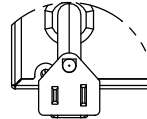
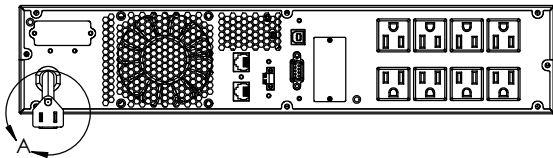
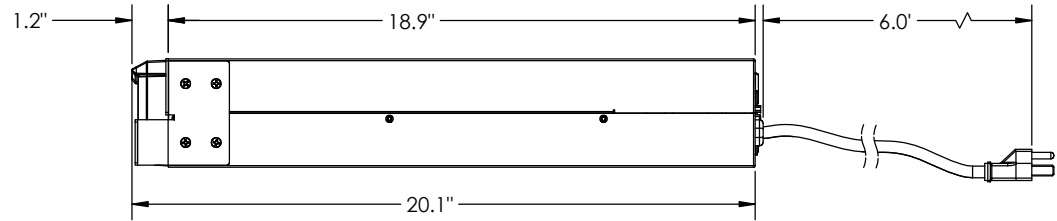
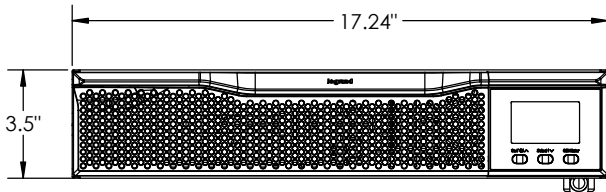
RACK MOUNT CONFIGURATION

INCLUDES L/R MOUNTING BRACKETS W/ SCREWS



TOWER CONFIGURATION

INCLUDES (4) FEET



DETAIL A
 NEMA 5-15P
 SCALE 1 : 2

- ALSO INCLUDED:**
- (1) USB CABLE
 - (1) MANUAL

*** NOTICE ***
 THIS DOCUMENT CONTAINS CONFIDENTIAL AND/OR PROPRIETARY INFORMATION INTENDED FOR USE ONLY BY THE INDIVIDUAL(S) PROVIDED. NEITHER THIS DOCUMENT, NOR ANY INFORMATION CONTAINED HEREIN, MAY BE COPIED, DISTRIBUTED, DISCLOSED TO ANY THIRD PARTY OR USED IN ANY MANNER OTHER THAN FOR WHICH IT HAS BEEN PROVIDED, WITHOUT THE PRIOR WRITTEN CONSENT OF LEGRAND



TITLE
 LEGRAND UPS LINE INTERACTIVE 1500VA, 120V, 50-60HZ

DWN	MM	3/6/2019	SIZE B	CAD FILE LU1500RTL	DWG NO LU-1500-RTL	REV 00
CHK	RJG	3/7/2019	SCALE 1:4		SHEET 1 OF 1	
APPR	CV	3/18/2019				