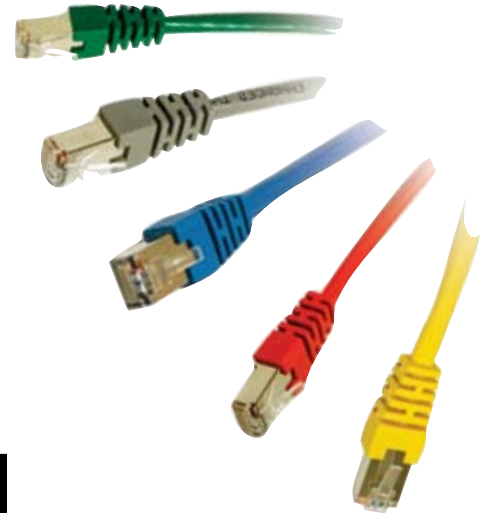


# Cat5e Shielded Patch Cables

Your mission-critical fast Ethernet and Gigabit computer networks require the stability and reliability of Enhanced Category 5 high-speed cabling to distribute data, voice and video. To protect your high-speed network from noise and electromagnetic interference, use Cables To Go's Shielded Enhanced Cat5 Patch Cables. Each cable comes UL verified to meet all Cat5e TIA/EIA standards. The molded boot provides extra strain-relief and durability. Cables To Go Shielded Enhanced Cat5 Patch Cables are available in a variety of colors to easily color-code your network installation.



## Order Information

Length	Gray	Blue	Red	Yellow	Green	Black
<b>3ft</b>	27240	27241	27242	27243	27244	28690
<b>5ft</b>	27245	27246	27247	27248	27249	28691
<b>7ft</b>	27250	27251	27252	27253	27254	28692
<b>10ft</b>	27255	27256	27257	27258	27259	28693
<b>14ft</b>	27260	27261	27262	27263	27264	28705
<b>25ft</b>	27265	27266	27267	27268	27269	28711
<b>50ft</b>	27270	27271	27272	27273	27274	28717

**For maximum performance, use Cables To Go™ Shielded Patch Panels and Shielded Keystone Jacks for total end-to-end protection**

## Specifications

- Connector: Shielded 50-micron gold plated RJ-45 Male to Male
- Conductor: 4-pair 24 AWG Stranded STP
- Jacket: PVC
- Molded boot provides extra strain-relief and durability
- Foil shielding with drain wire
- Applications:
  - 1000 BASE-T; 100 BASE-T; 10 BASE-T (IEEE 802.3)
  - 4/16 Mbps Token Ring (IEEE 802.5); 100 VG-Any LAN
  - 100 Mbps TP-PMD (ANSI X3T9.5); 55/155 Mbps ATM
  - Voice
- Designed For: Network Adapters, Hubs, Switches, Routers, DSL/Cable Modems, Patch Panels and other twisted-pair applications in high-noise environments
- Wired: TSB 568B (AT&T 258A)
- Certifications: TIA/EIA; UL Listed
- Lifetime Warranty