

This Snagless Discontinuous Shielded Cat6a patch cable is ideal for use with HD A/V applications from HDBaseT extenders and Power over Ethernet (PoE) applications requiring higher levels of current. The HD A/V application is perfect for conference rooms and digital signage where greater distance requirements are needed between a source and a display. Each patch cable is fully tested to meet ANSI/TIA 568 C.2 Cat6a channel requirements.

**HDBaseT Certified**

These cables have been tested and validated to guarantee they consistently meet the highest industry performance and safety standards.

**Design Features**

The uniquely designed Isolation Wrap contains discontinuous sections of metallized material, held in place by a polymeric layer. These cables have a nominal 0.265" diameter that allows for higher cable density and smaller bend radius than other Cat6a cable products. These cables are also designed for Power over Ethernet (PoE) applications type 1-4 according to IEEE 802.3bt draft D1.2.

**Discontinuous Shield**

These cables have discontinuous metallic shielding elements surrounding the inner 4-pair core of the cable. The effect of this approach is to attenuate both electromagnetic signals that emanate from the cable core and the potentially interfering electromagnetic signals that are generated by other sources. The metallic shielding elements are designed to be discontinuous to avoid any need for grounding, which is a requirement for shielded cable designs, and have been shown to provide superior Alien Crosstalk performance in comparison to conventionally designed Category 6A UTP cables.

**Features and Benefits**

- Discontinuous shielding avoids need for grounding
- HDBaseT Class A and B certified
- Designed to support up to 10 Gigabit data transmission
- Snagless design for high density applications

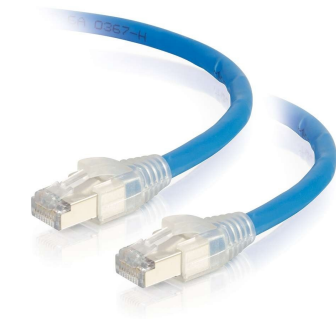
**Additional Technical Specifications**

**Physical Characteristics**

- Cable type: Solid Non-Continuous FTP
- Wiring scheme: 568B
- Temperature rating: 75°C
- Separator Cross-web
- Isolation Wrap: Proprietary construction
- Jacket: CMP: FR, low smoke PVC
- Conductor type: 23AWG (0.57mm) (solid annealed copper)
- Characteristic Impedance: 100
- Testing: ANSI/TIA 568 C.2 Cat6a channel tested
- Sustainability: UL Certified EPD, HPD, Multi-Attribute Certification, USGBC® Member, RoHS-compliant/RoHS 2-compliant, REACH-compliant
- Performance Compliance: UL 444, CSA C22.2 No. 214-08, UL 1666, NFPA 262, ANSI/TIA-568-C.2, Article 800, NEC (NFPA 70), HDBaseT Class A and B
- NRTL Programs: UL Verified CAT 6A, UL, c(UL) Listed CMR, UL, c(UL) Listed CMP, HDBaseT Certified

**Connector**

- Connector Type: RJ-45 Male
- Housing: Polycarbonate
- Contacts: 50µm gold plated
- Hood: Molded Snagless PVC
- Dimension [L x W x H]: 38.2 x 11.6 x 15.1mm



**Features & Benefits**

Discontinuous shielding avoids need for grounding

HDBaseT Class A and B certified

Designed to support up to 10 Gigabit data transmission

Snagless design for high density applications

**Specifications**

**General Info**

Product Line	C2G	Color	Blue
UPC Number	757120431787	Country Of Origin	United States

---

Application Sector	Commercial, Industrial, Residential	Warranty Type	Lifetime
--------------------	-------------------------------------	---------------	----------

---

Type	Cable, HDBaseT
------	----------------

---

#### Dimensions

---

Product Length US	300.0 FT	Cable Length	300 ft
-------------------	----------	--------------	--------

---

#### Listing Agencies / 3rd Party Agencies

---

CE Certified	Yes
--------------	-----

---

#### Buy American Act Compliance

---

TAA Compliant	Yes
---------------	-----

---

#### Technical Information

---

Jacket Material	PVC (Polyvinyl Chloride)	Wire Gauge	23 AWG
-----------------	--------------------------	------------	--------

---

Jacket Application	Plenum Rated	Cable Type	Ethernet Patch Cable, Snagless
--------------------	--------------	------------	--------------------------------

---

Jacket Rating	CMP Rated, FT6 Rated
---------------	----------------------

---