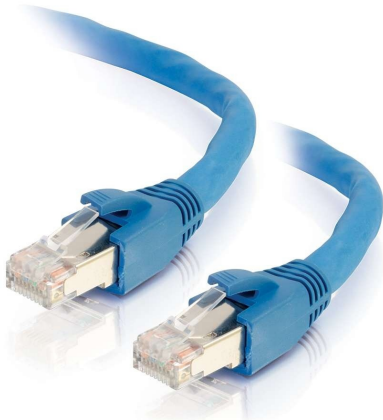




C2G
200ft (61m) Cat6 Snagless Solid Shielded Ethernet Network Patch Cable - Blue
Part No. CG-43122



This shielded snagless Cat6 cable is perfect for use with our [HDBaseT Products](#) or with any other application where long length shielded cable is required. This cable is optimized for superior performance in noisy environments and is designed to handle bandwidth-intensive applications. This cable is designed to meet Cat6 TIA/EIA and ISO/IEC standards for patch cable performance. Each individual pair is bonded together to help maintain the twist-spacing throughout the cable right up to the termination point. The cable design minimizes Near-End Crosstalk (NEXT) levels and features high quality solid conductors, full cable shielding and is terminated with a snagless boot & shielded plug. The combination of the shielded plug, shielded cable, snagless boot and solid conductors provides superior performance over standard stranded conductor patch cables when used with HDBaseT solutions.

Features & Benefits

HDBaseT Certified

4- pair solid conductor construction

Overall cable shield and shielded connectors

Snagless connector design

Specifications

General Info

Product Line	C2G	Color	Blue
UPC Number	757120431220	Country Of Origin	China
Features	PoE (Power Over Ethernet), Solid Conductors	Application Sector	Commercial, Industrial, Residential
Warranty Type	Lifetime	Type	Cable

Dimensions

Product Length US	200.0 FT	Cable Length	200 ft
-------------------	----------	--------------	--------

Technical Information

Jacket Material	PVC (Polyvinyl Chloride)	Wire Gauge	23 AWG
Cable Type	Booted, Ethernet Patch Cable, Shielded (STP), Snagless	Jacket Rating	Standard / Non-Rated
Adapter Rear	RJ-45 Male	Adapter Front	RJ-45 Male