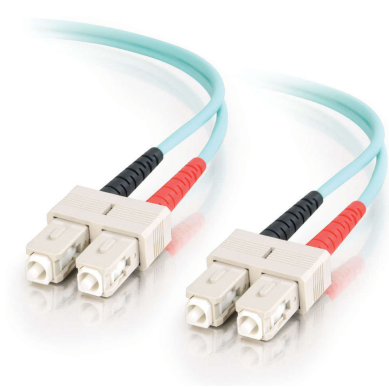




**C2G**  
**16.4ft (5m) SC-SC 10Gb 50/125 OM3 Duplex Multimode Fiber Optic Cable - Plenum CMP-Rated - Aqua**  
Part No. CG-36225



This OM3 Duplex Multimode Fiber Optic Cable is ideal for connecting 10GBase-SR, 10GBase-LRM, SFP+ and QSFP+ transceivers for 10 gigabit network connections. This cable has a OFNP-rated jacket allowing it to be used in a plenum application. This cable also provides backward compatibility with existing 50/125 equipment and the performance headroom required to support LED and VCSEL laser light sources, and 10 gigabit ethernet applications.

**Features & Benefits**

|  |   |
|--|---|
| Designed to support 10 gigabit network connections and equipment | Plenum rated for cable runs through walls and drop ceilings with plenum air space |
| Meets all TIA/ANSI standards                                     | Backward compatibility with existing 50/125 equipment                             |

**Specifications**

**General Info**

|                    |                        |                   |          |
|--------------------|------------------------|-------------------|----------|
| Product Line       | C2G                    | Color             | Aqua     |
| UPC Number         | 757120362258           | Country Of Origin | China    |
| Application Sector | Commercial, Industrial | Warranty Type     | Lifetime |
| Type               | Cable                  |                   |          |

**Dimensions**

|                   |         |              |         |
|-------------------|---------|--------------|---------|
| Product Length US | 16.4 FT | Cable Length | 16.4 ft |
|-------------------|---------|--------------|---------|

**Technical Information**

|                        |                      |                 |                          |
|------------------------|----------------------|-----------------|--------------------------|
| Fiber Optic Cable Type | Multimode, OM3       | Jacket Material | PVC (Polyvinyl Chloride) |
| Jacket Application     | Plenum Rated         | Bend Radius     | 50 mm                    |
| Simplex/Duplex         | Duplex               | Cable Type      | Fiber Optic              |
| Jacket Rating          | CMP Rated, FT6 Rated | Cable Diameter  | 2.8 mm                   |
| Data Transfer Rate     | 10 Gbps              | Adapter Rear    | SC Male                  |
| Adapter Front          | SC Male              | Fiber Size      | 50/125                   |