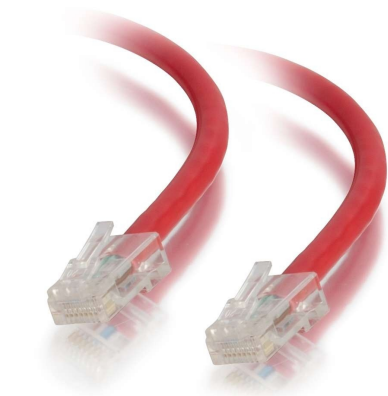




C2G

**Discontinued - 100ft (30.5m) Cat5e Non-Booted Unshielded (UTP) Ethernet Network Patch Cable - Red**  
Part No. CG-26973



For fast Ethernet networks that require bandwidth-intensive voice, data, or video distribution applications. Meets all Cat5e TIA/EIA standards, and drastically reduces both impedance and structural return loss (SRL). Each of the individual pairs is bonded together to help maintain the twist-spacing throughout the line right up to the termination point. Constructed from high quality copper cable, this design minimizes Near-End Crosstalk (NEXT) levels. Available in a variety of colors to easily color-code your network installation.

## Features & Benefits

Designed for network adapters, hubs, switches, routers and more

Constructed with unshielded twisted pair wires

Available in 10 colors to color-code a network

Available in lengths up to 150ft

CMG In-Wall Rated Jacket

## Specifications

### General Info

|                    |                                     |                   |          |
|--------------------|-------------------------------------|-------------------|----------|
| Product Line       | C2G                                 | Color             | Red      |
| UPC Number         | 757120269731                        | Country Of Origin | China    |
| Application Sector | Commercial, Industrial, Residential | Warranty Type     | Lifetime |
| Type               | Cable                               |                   |          |

### Dimensions

|              |        |
|--------------|--------|
| Cable Length | 100 ft |
|--------------|--------|

### Technical Information

|                 |  |               |                      |
|-----------------|--|---------------|----------------------|
| Jacket Material | PVC (Polyvinyl Chloride)                         | Wire Gauge    | 24 AWG               |
| Cable Type      | Ethernet Patch Cable, Unbooted, Unshielded (UTP) | Jacket Rating | Standard / Non-Rated |
| Cable Diameter  | 5.3 mm   | Adapter Rear  | RJ-45 Male           |
| Adapter Front   | RJ-45 Male                                       |               |                      |