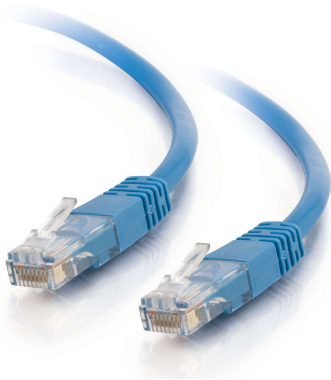




**C2G**  
**Discontinued - 35ft (10.7m) Cat5e Molded Solid Unshielded (UTP) Ethernet Network Patch Cable - Blue**  
Part No. CG-15162



For voice/data/video distribution, this cable will handle bandwidth-intensive applications. Meets all Cat5E TIA/EIA standards, and drastically reduces both impedance and structural return loss (SRL) . Each of the individual pairs is bonded together to help maintain the twist-spacing throughout the line right up to the termination point. Constructed from high quality cable and a shortened body plug, this design minimizes Near-End Crosstalk (NEXT) levels.

Please Note: Solid Cat5E patch cables offer increased performance for "over Cat5" signal boosters.

## Features & Benefits

Solid twisted pair cable for high performance networking applications

Supports 1 Gigabit networks up to 328ft for fast data transmission and maximum performance

Meets all Cat5e TIA/EIA requirements for supporting a wide variety of applications

Designed to minimize Near-End Crosstalk (NEXT) levels

## Specifications

### General Info

Product Line	C2G	Color	Blue
Features	Solid Conductors	Application Sector	Commercial, Industrial, Residential
Warranty Type	Lifetime	Type	Cable

### Dimensions

Cable Length	35 ft
--------------	-------

### Technical Information

Jacket Material	PVC (Polyvinyl Chloride)	Wire Gauge	24 AWG
Cable Type	Booted, Ethernet Patch Cable, Unshielded (UTP)	Jacket Rating	Standard / Non-Rated
Adapter Rear	RJ-45 Male	Adapter Front	RJ-45 Male