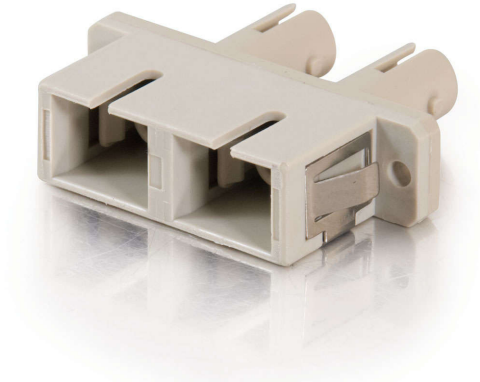


A great solution when you need to join two fiber patch cables together. The coupler is panel-mountable so you can use it where all your connections are accessible.



Features & Benefits

Allows for two fiber patch cables to be joined together

Panel-mountable for accessible connections

Durable, plastic design

Specifications

General Info

Product Line	C2G	Color	Beige
UPC Number	757120176466	Country Of Origin	China
Application Sector	Commercial, Industrial	Warranty Type	Lifetime
Type	Adapter		

Technical Information

Simplex/Duplex	Full-Duplex	Adapter Rear	ST Female
Adapter Front	SC Female		